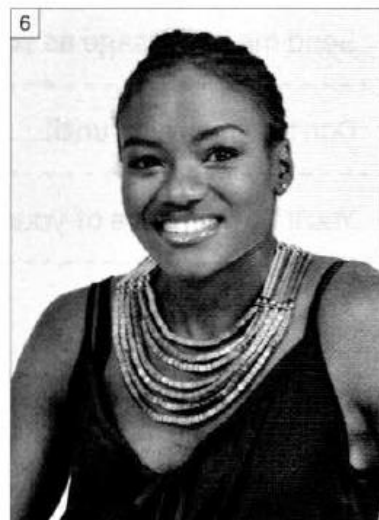
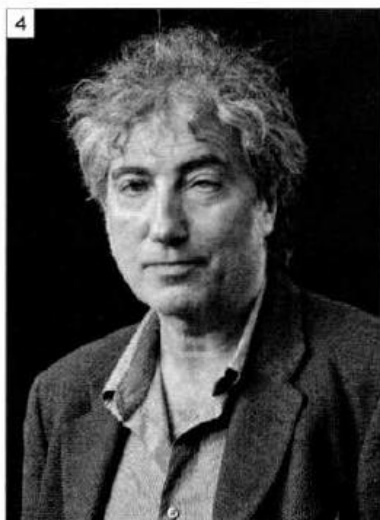
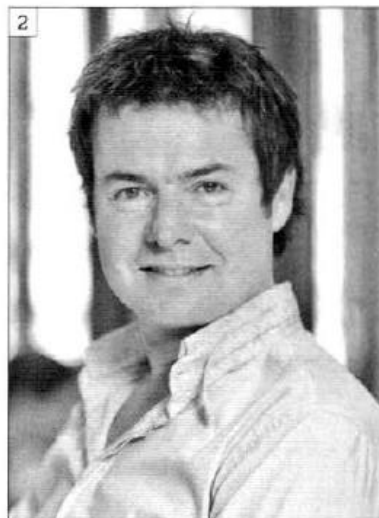


6B COMMUNICATIVE Who do you think they are?



- a** Look at the people in the pictures and the list of jobs below. Each person does one of the jobs from the list.

boxer hairdresser politician psychoanalyst university professor violinist

- b** Discuss each person with your partner. Eliminate the jobs you think are impossible for that person. Use *He / She can't be a...* and say why.

The man in photograph 1 can't be a boxer, because he looks too old.

- c** Now say which jobs you think are possible. Use *He / She might be...*

*He might be a university professor...
but he doesn't look intelligent enough.*

- d** Now make a final choice for each person. Use *He / She must be...* and say why. Your teacher will tell you if you're right.

He must be a... because...